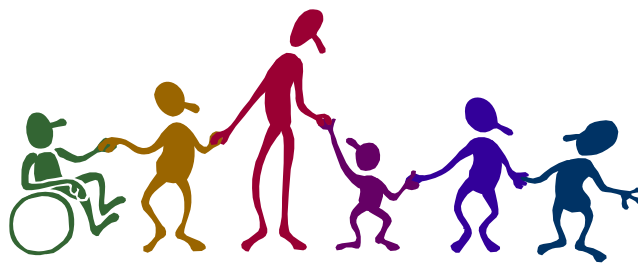


THE BRAKENHALE SCHOOL ANTI-BULLYING POLICY Information for Parents

*The Brakenhale School -
no place for bullies!*

Policy Statement

The Brakenhale School aims to be a safe and secure learning environment in which all members of the community are respected, safe and able to reach their potential.



Bullying in all its forms has no place in The Brakenhale School

Why we must STOP Bullying!

Bullying affects everyone, not just the bully and their victim but also the bystanders who witness the violence, intimidation and the distress of the victim.

What is bullying?

The Brakenhale School Council has adopted the Kidscape definitions of bullying.

The following behaviours have been identified as bullying behaviours.

Physical: Pushing, kicking, hitting, pinching, and any other forms of violence, threats

Verbal: Name-calling, sarcasm, spreading rumours, persistent teasing

Emotional: Excluding (i.e. sending to Coventry), tormenting (i.e. hiding books, threatening gestures), ridicule, humiliation

Racist: Racial taunts, graffiti, gestures

Sexual: Unwanted physical contact or abusive comments.

If your child is subjected to a sustained level of unpleasantness, which includes any of the behaviours listed, then this should be treated as bullying and reported to the school.



How do I know if my child is being bullied?

Encourage your child to talk about their day at school

Watch out for signs of

- General unhappiness or bad temper, other out of character behaviour.
- Tummy aches, headaches, especially in the mornings or Sunday evening.
- Damage to or loss of possessions.

Sometimes your child will experience relationship problems with others. In the majority of cases the difficulties are part of growing up and although the student feels unhappy about 'falling out' with those involved such incidents are not necessarily

bullying incidents. In these situations parents will be able to give support simply by listening to their child and talking through what has happened.

If, as parents, you are in any doubt please get in touch with school. Your child's Tutor or Head of Year will listen to your concerns and suggest an appropriate course of action.

Students can report incidents in school by talking to their Tutor or Head of Year or by email:

Internal email: bully@brakenhale
From home: bully@brakenhale.bracknell-forest.sch.uk

Once the bullying incident has been reported to school

A member of staff will talk to your child the same day and will go through their statement if one has been made at home, or will take a statement.

The incident will be logged and the Head of Year, if they are not already dealing with the incident, will be informed.

An investigation will take place. This will usually take the form of the Head of Year talking separately to the bully/bullies, to any witnesses and to your child.

Action will be taken. It is likely that school staff and others will use a 'no blame approach' because this has been found the most successful method of dealing with bullying incidents.

- If it seems appropriate, your child and the bully may meet with the Tutor or Head of Year to discuss what has been happening and to agree a way forward.
- The school may organise a conference involving all parties. The Head of Year or Education Welfare Officer could chair such a conference.
- Some incidents may warrant the intervention of the school Police Liaison Officer who might organise a more formal 'Restorative Justice' conference.

LEARN ~ ACHIEVE ~ SUCCEED



Why should we report bullying incidents?



Sometimes students do not want parents to report bullying incidents because they are frightened that this will make the situation worse.

Our school survey showed that this is not normally the case.

Not reporting a bullying incident allows the bully to continue with their bullying behaviour.

This is not good for the bully, who needs help in order to change their antisocial behaviour, or for those who are the victims or those who witness such events.

Consequences

There will be consequences for bullying behaviour. The consequences will vary according to the severity of the incident but all incidents of bullying will be treated seriously.

Typical consequences include:

1. Informing the parents of the bully who will possibly be called into school to discuss the behaviour of their child.
2. Bullying incidents will be logged in the student's file for a fixed period of time. Previous bullying incidents will be taken into consideration.
3. The bully may write a letter of apology to those involved.
4. The bully will be made aware of his/her behaviour and its effect upon the victim.
5. The bully will be segregated from other students during break and lunch times for one or more days.
6. In very serious situations the bully will be excluded from lessons to a supervision room or excluded from school for a fixed period.
7. The bully will be given counselling and help to improve their behaviour.
8. Outside agencies may become involved.
9. The Headteacher and Deputy Headteacher will become involved when offences are repeated or very serious.

The Head of Year will keep parents informed and will monitor all those involved after conflicts have been resolved.

leaflets/bullying for parents sept 07 bifold

THE BRAKENHALE SCHOOL

Rectory Lane
Bracknell
Berkshire
RG12 7BA



Tel: 01344 423041
Fax: 01344 300397

Email: bully@brakenhale.bracknell-forest.sch.uk
Web: www.brakenhale.bracknell-forest.sch.uk